

A SLICE OF LIFE

Adnan Khan
Aun Raza
Gul e Shazma
Hamza Qazi
Javaid Iqbal Mughal
Lariab Ahmad

Opens

10th Dec, 2021 at 6:00 pm

Venue

79 B/1, off MM Alam road, Gulberg III, Lahore, Pakistan.
Ph: 042-35718038, 35762784.

A SLICE OF LIFE

The artists in the show delve into a deeper investigation while exploring image making through their creative process. They inspire and recharge the creative batteries of the viewer.

Adnan Khan's brilliantly detailed artworks with bright contrasting colors and pointillist style has captured the essence of his subject.

Aun Raza highlights fantasy intents through his vibrant color palette, creating an intimate bond of viewer's souls.

Javaid Iqbal Mughal's bright and intense yet muted and relaxed color palette draws our attention to the areas having the power to vibrate and pop out.

The quirky use of colors to create a bold and contrasting image with harmony and balance can be seen in Lariab Ahmed's work.

Gul E Shazma's use of sharp colors in her cityscapes is a way to express an emotional response towards nature.

Hamza Qazi has created subtle compositions to depict the unusual experience of solitude and terror throughout the Covid-19 pandemic. His artworks are an excellent example of how light affects the color on his subject. The use of a vibrant blue against the black canvas is creating a stunning counter balance.

He also showcases a digital derivation of one of his physical works (oil on linen) first and then a video in an NFT form. His idea was to experiment the dependency of visual upon medium.

Each individual's thought process has materialised into an engaging visual imagery.



Adnan Khan

My inspiration comes directly from the lifestyle and innocence of children native to my city. As a child is content and develops optimistic, I have painted the lively emotions of a child in vivid colors.



Adnan Khan | Oil on Canvas | Technique Dots 36900 | 36" x 41" | Code 01

Gold gifts



Adnan Khan | Oil on Canvas | Technique Dots 110000 | 45" x 43" | Code 02

The beauty of eyes



Adnan Khan | Oil on Canvas | Technique Dots 40700 | 37" x 44" | Code 03

Innocent



Adnan Khan | Oil on Canvas | Technique Dots 35100 | 36" x 39" | Code 04

Help



Aun Raza

Talking about my Art Practice, it basically revolves around that fantasy based intentions of a soul which one could neither push away nor accept fully by heart. I really believe that imagination lives within us more than a reality. There are a lot of important and personal scenarios running around us who we want to touch, to feel, to fully indulge ourselves in them with the help of our soul being ignored. One can feel his/her non spoken desires in my paintings with the intimacy of a bond a viewer creates at that moment. Basically a viewer witnesses my own war being told in the form of different elements attached with the gender of glory. I use a lot of different elements in my works, to show a never ending relation between reality and imagination. Elements I use in the execution are comprised of their own symbolic and living values. There is always a story in someone's mind, which sometimes never gets a chance to be narrated or listened, but in my works you would find the pieces of your stories scattered in their never ending wheel. My medium speaks to me about the truth that my compositions are going to scream out and softens one's heart at the same time with balanced intensity. In the end, one can never judge whether we find reality in fantasy or we confront fantasy while breathing.



Aun Raza | Oil on Canvas | 48" x 36" | Code 05

Eternity's on loop



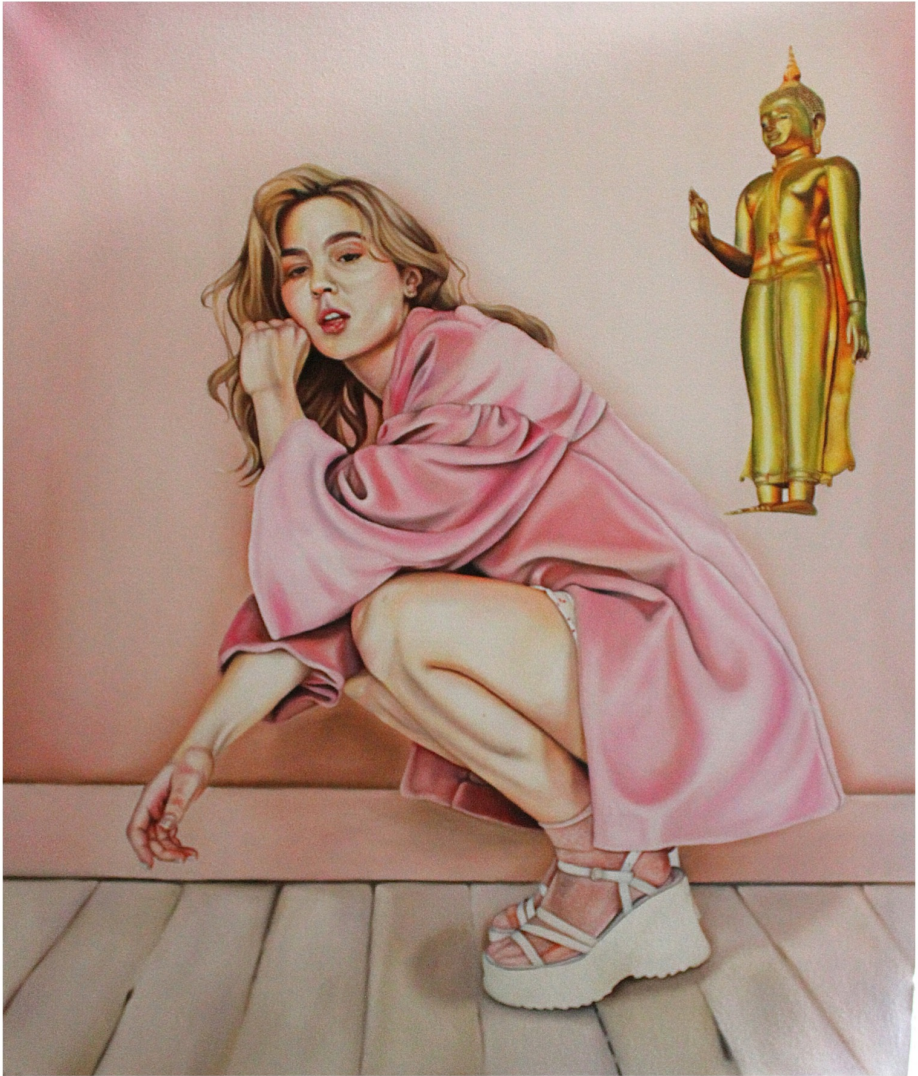
Aun Raza | Oil on Canvas | 36" x 36" | Code 06

Brwawal of Divination



Aun Raza | Oil on Canvas | 36" x 21" | Code 07

Being Stared



Aun Raza | Oil on Canvas | 42" x 30" | Code 08

Faithless Desires



Gul e Shazma

My colorful paintings show different types of emotions and environment with the technique of pseudo-realism (combination of unreal abstract elements which together make a comprehensible realist representation). My sharp coolers are the new way to show some relaxation in our daily busy life to be alive.



Gul e Shzma | Oil on Canvas | 18" x 24" | Code 9

Cityscape 4



Gul e Shzma | Oil on Canvas | 20" x 30" | Code 10

Cityscape 1



Gul e Shzma | Oil on Canvas | 18" x 24" | Code 11

Cityscape 3



Gul e Shazma | Oil on Canvas | 24" x 24" | Code 12

Cityscape 2



Hamza Qazi

As single entity I believe we are the amalgamation of traces we found around ourselves. Living in a changing time where everything is becoming so digital that it has created a whole new nonphysical and magical reality. As an artistic expression I can't resist this influence in my paintings.

Besides this bridging two times another thing that has impacted every one of us is the pandemic. I tried to be as pure as i could in terms of expression of an experience in the time of this unusual experience of solitude and terror of covid-19. I am making subtle compositions that helped me depict the playful experience as it was for me through light, space, and figure.



Hamza Qazi | Oil on Linen | 36" x 27" | Code 13

Swaddling Girl



Hamza Qazi | Oil on Linen | 24" x 40" | Code 14

Focal me



Hamza Qazi | Oil on Linen | 17" x 31" & 17" x 8" (diptych) | Code 15

Apples



Javid Iqbal Mughal

My work explores silent conversations between the male genders in society and studies the unbalanced nature of hierarchy amongst men. These hierarchies, which in my opinion are questionable, have become norms accepted and followed by society. I unpack these muted conversations by using facial expressions and hand gestures, which are considerably masculine and at times aggressive. Compositional elements such as chiaroscuro and the use of forms that appear obscured or unrevealed are employed to heighten the mystery and sinister mood within the works.



Javaid Iqbal Mughal | Oil on canvas | 40" x 30" | Code 16

Hunters



Javaid Iqbal Mughal | Oil on canvas | 20" x 10" | Code 17

Give but give until it hurts



Laraib Ahmad

Laraib stands on the cross roads of faith and philosophy. Her visual language investigates an individualized perspective on platonic concepts, ideas and forms. The language is built on the foundation of representing mind as an immaterial substance that is also the seat of soul. The imagery and text is a 'language' utilizing personalized archetypal symbols to translate this metaphysical interaction between the body and the mind (soul), with a focus on the illusions and dimensions a body/group of bodies can exist/co-exist in.



Lariab Ahmad | Oil and enamel on wood panel | 38".1 x 50".8 | Code 18

Built Circa



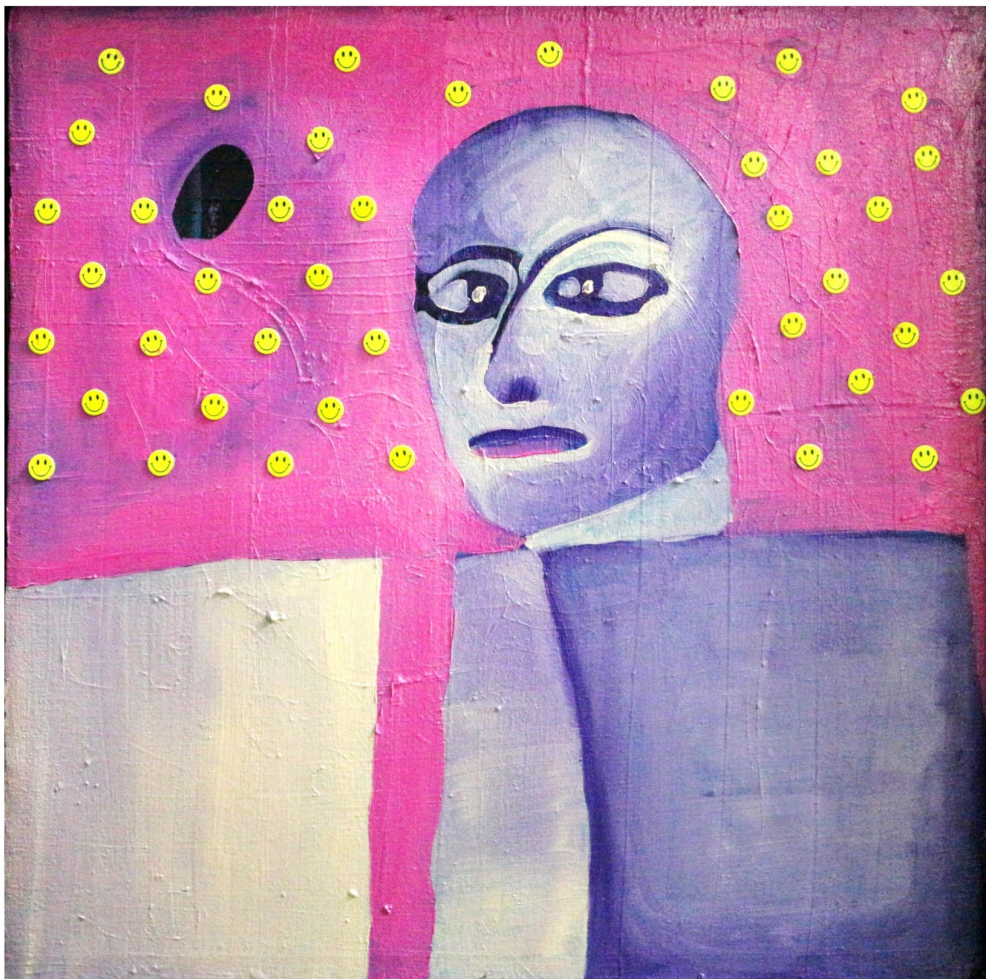
Lariab Ahmad | Oil and enamel on wood panel | 50".9 x 81".4 | Code 19

I am the best reason why I should stay in the flames.



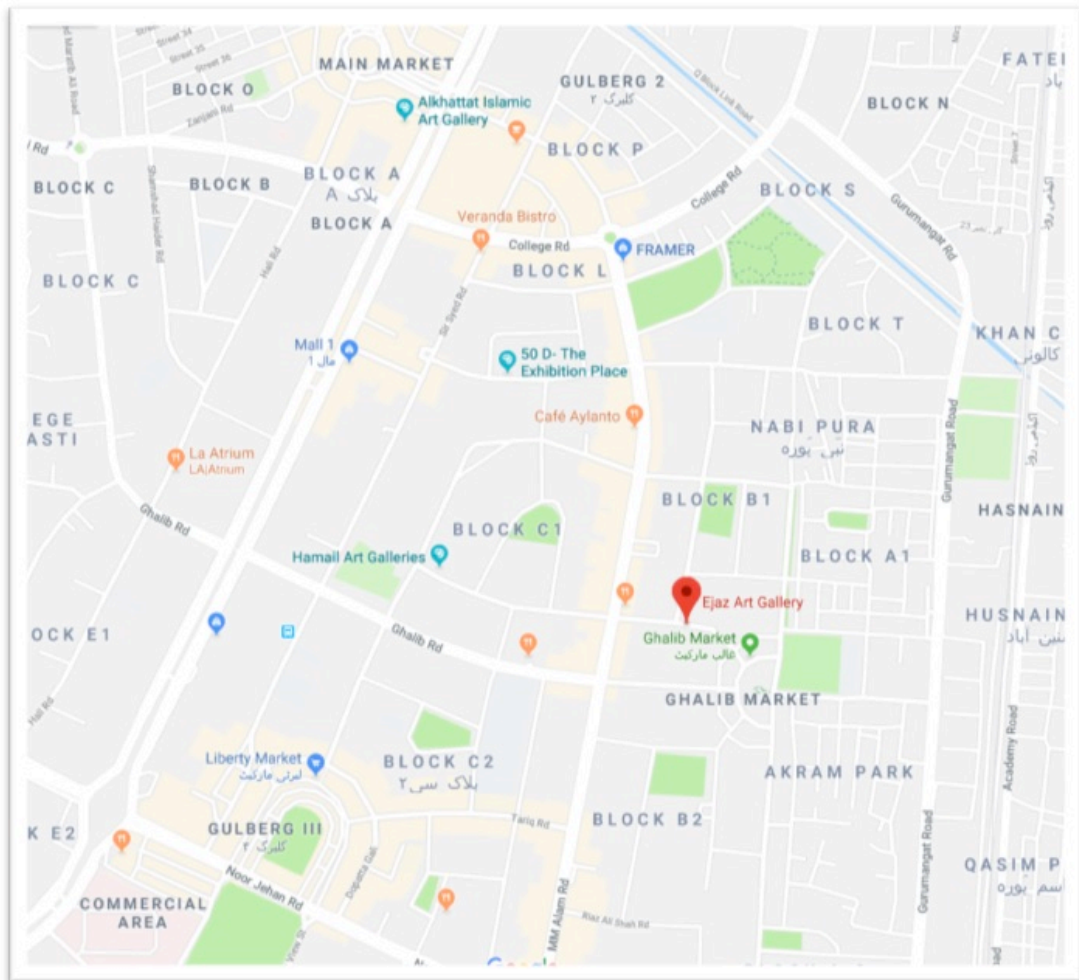
Lariab Ahmad | Oil, febric and enamel on wood panel | 38".1 x 50".8 | Code 20

Melancholic Shketchs



Lariab Ahmad | Oil on Canvas | 26".4 x 26".4 | Code

Sketch of platonic friends






Designed by Amir Shah

Contact us: +923018447746

Address: 79-B/1, off M.M. Alam Road, Gulberg III, Lahore, Pakistan.
Cell: +92 300 8447748, **Ph:** 042-35718038, 35762784



✉ ejazartgallery@yahoo.com 🌐 www.ejazartgallery.com    [ejazartgalleries](https://www.instagram.com/ejazartgalleries)